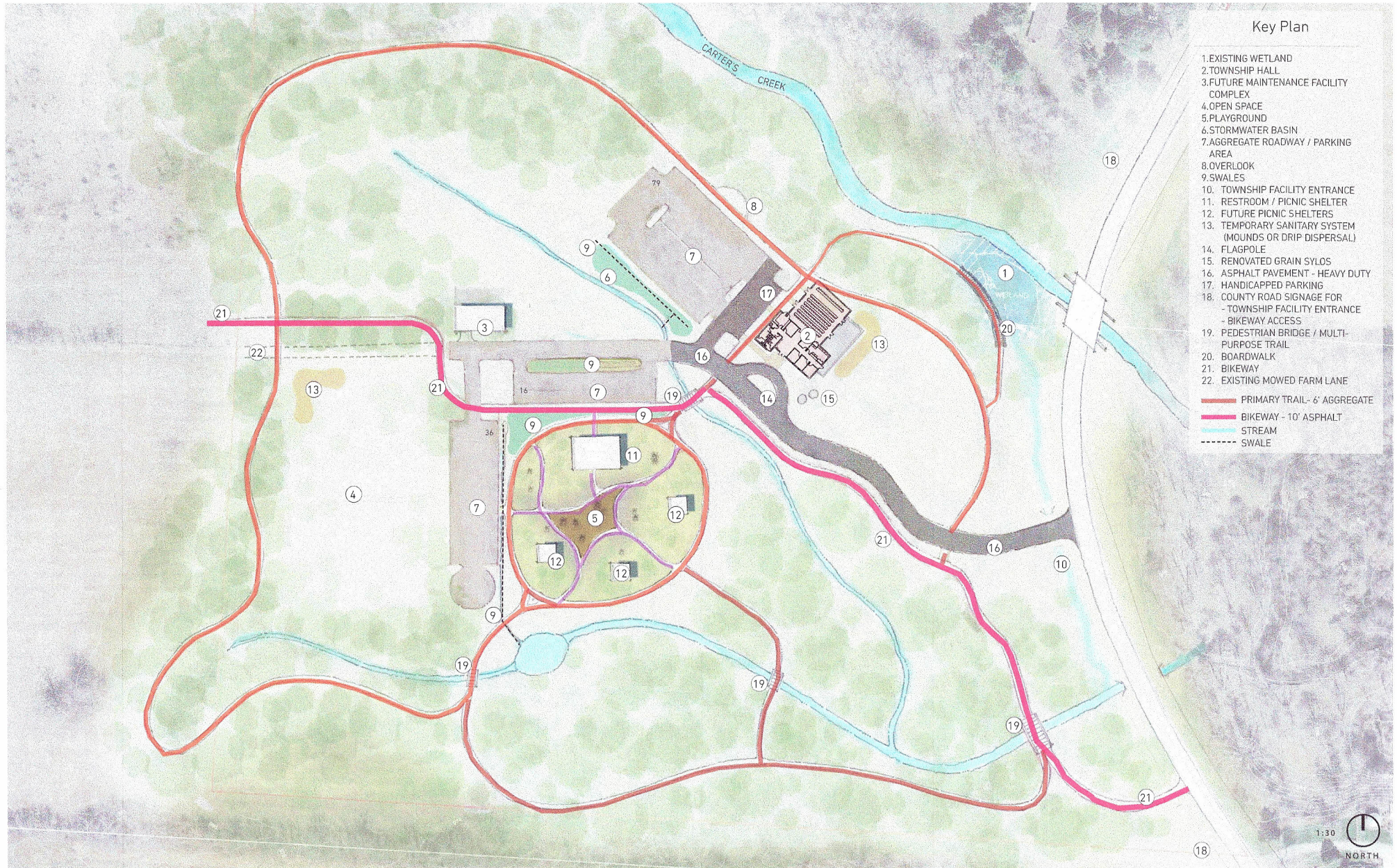


Overall Site Master Plan

Kingston Township Park - Master Plan

10-10-14



Key Plan

1. EXISTING WETLAND
2. TOWNSHIP HALL
3. FUTURE MAINTENANCE FACILITY COMPLEX
4. OPEN SPACE
5. PLAYGROUND
6. STORMWATER BASIN
7. AGGREGATE ROADWAY / PARKING AREA
8. OVERLOOK
9. SWALES
10. TOWNSHIP FACILITY ENTRANCE
11. RESTROOM / PICNIC SHELTER
12. FUTURE PICNIC SHELTERS
13. TEMPORARY SANITARY SYSTEM (MOUNDS OR DRIP DISPERSAL)
14. FLAGPOLE
15. RENOVATED GRAIN SYLOS
16. ASPHALT PAVEMENT - HEAVY DUTY
17. HANDICAPPED PARKING
18. COUNTY ROAD SIGNAGE FOR - TOWNSHIP FACILITY ENTRANCE - BIKEWAY ACCESS
19. PEDESTRIAN BRIDGE / MULTI-PURPOSE TRAIL
20. BOARDWALK
21. BIKEWAY
22. EXISTING MOWED FARM LANE

- PRIMARY TRAIL - 6' AGGREGATE
- BIKEWAY - 10' ASPHALT
- STREAM
- - - SWALE

